

# STURDY SEAMS AND FANCY RIBBONS

## Stabilized Seams. Enchanting Decorative Effects!

When sewing stretch materials or knits, seams tend to stretch out when heavily strained. Inserting a tape into such seams will stabilize shoulder, arm and side seams, keeping your sewing projects in good shape for a long time! Tape insertion is much easier than you think: The special taping foot of your overlocker positions and guides the tape, overstitches and finishes it. All in one easy step – with professional and absolutely durable results! It's equally comfortable to attach fancy ribbons for eye-catching, decorative seams or perfect edge finishings with this fabulous specialty foot. Just give it a try!



Cotton, satin, velvet ribbons and tapes: The taping foot takes them all!

### THE TAPING FOOT

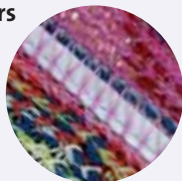
Attaching narrow ribbons with a sewing machine usually means that you have to baste the ribbon in place by hand to prevent it from slipping. A serger can do it much easier! Its optional taping foot has a special guide for precise feeding and simultaneous sewing on of tapes and ribbons.

## Materials Required for Attaching Tapes and Ribbons:

- > SINGER® serger
- > SINGER® taping foot for sergers/overlockers

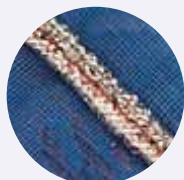
## For stabilizing seams on knits, or any other stretch materials:

- > Cotton tape as seam stabilizer, approx. 0.7 cm wide
- > 3 Reels overlock thread in fabric-matching color
- > Overlock needles 2022



## For decorative seams on viscose, silk, cotton, velvet, etc.:

- > Satin or velvet ribbons for seam embellishments, approx. 0.5 – 1.0 cm wide
- > 3 Reels overlock thread in matching colors
- > Decorative thread as needle thread, if desired



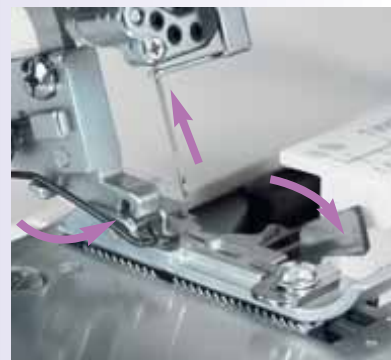
# 1 Preparing the Serger/Overlocker:

Inserting a tape into knit fabric to stabilize the seam:

Make the following machine settings:

- > Stitch program: 3-thread overlock or 4-thread ultra-stretch mock safety stitch
- > Stitch length: N
- > Differential feed: N
- > Thread tension: Standard settings

1 | Snap on the taping foot. Needle insertion depends on the tape width and the stitch selected. The general rule is: Narrow tapes are attached with the right needle, wider ones usually with left needle insertion. Raise the needle in highest position. Disengage the upper knife.



# 2 Preparing the Presser Foot for Tape Insertion:

2 | For precise feeding of the tape while sewing, the taping foot must first be adjusted to the width of the tape:

- > Raise the taping foot and insert the cotton tape from the right into the foot, making sure the tape lies on top of the foot's front while running under the presser foot in the back.
- > Depending on the tape and stitch width you can easily move the small edge guide of the foot a few millimeters to the right or left with the adjusting screw.
- > **Adjust the edge guide so the needle stitches along the tape on the left and completely overstitches the tape while sewing.**
- > The tape should be lined up with the fabric edge on the right and evenly run along the edge while sewing.



Tip: Always make a test seam on a piece of scrap material before you start your project to ensure all adjustments are correct.

# 3

## Let's Start Sewing:

### 3 | Lay your cut fabric pieces with right sides together

> Place the fabric layers under the presser foot, lining up the tape with the fabric edge. Start sewing on the tape. The raw fabric edges are finished simultaneously.



**Important:** If you're using the 3-thread overlock stitch, you have to sew an extra finishing seam (with the double chain stitch of your overlocker/serger, or with your sewing machine) – for a guaranteed optimal stability of the seam!

### 4 | Attaching tape with the 4-thread ultra-stretch mock safety stitch:

Prepare the overlocker and the taping foot as described before. Select the 4-thread ultra-stretch mock safety stitch.

**Advantage:** It eliminates the sewing of an extra finishing seam.



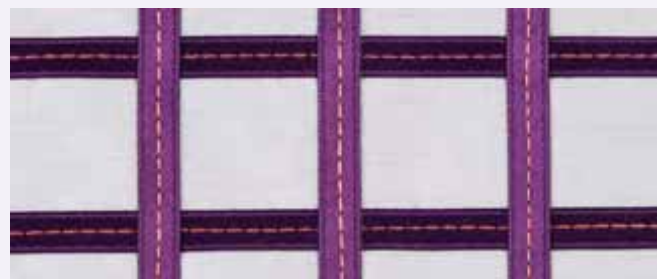
## Perfect Seam Finishings with Exquisite Accents

Whether fine table linens, evening wear, or light, airy curtains: Fine, lightweight materials need heavier seams to improve their drape. It's incredibly easy with the taping foot.

- > Press under your seam, first 1 cm, and again in the desired width.
- > Select the 2-thread flatlock stitch of your overlocker (alternatively, the 3-thread overlock stitch).
- > Insert a ribbon in matching fabric color into the taping foot.
- > Open out the seam and sew the ribbon on the right side of the fabric edge that you have pressed under 1 cm before.
- > Press in the wide seam and finish the seam with the straight stitch – the stitching becomes almost invisible if you're sewing in the seam join closely to the ribbon.

**Tip:** Why always use matching thread colors? Contrasting colors or sparkling decorative threads will add special flair to your work. Experiment with ribbons and threads in contrasting colors, or try different shades of one specific color. You'll be stunned by extraordinary seam embellishments.

## Fascinating Ribbons for Striking Effects!



Different materials, a vast range of colors and different widths – you'll be amazed at how creatively ribbons can be used for sewing unique things! A great variety of sewing projects can easily be accented with ribbons to create special effects on extravagant clothing, unique placemats, or out-of-the-ordinary accessories.

### Attaching Ribbons with the Double Chain Stitch

The double chain stitch is particularly suitable for sewing on ribbons, with highly decorative effects. And it really looks fantastic when sewn with contrasting threads!

- > Select the double chain stitch.
- > Draw lines on your fabric where you want to attach the ribbons.
- > Sew the first ribbon along the drawn line – the foot's guide helps you achieve precisely and evenly sewn seams.
- > Attach all other ribbons following the drawn lines – parallel or criss-cross!

## Attaching Decorative Ribbons with the Cover Stitch

5 | Is your overlocker equipped with a cover stitch? It looks fantastic when used for attaching decorative ribbons to your sewing projects and provides extra stability, thanks to the two parallel running needles accenting the ribbon with beautiful double top stitching.

**Give it a try with threads in contrasting colors to create real eyecatchers!**

- > Adjust the overlocker to cover stitch sewing
- > Disengage the upper knife
- > Insert the ribbon into the foot as described before
- > Attach the ribbon to the fabric

